

ນິຍາມໄມ້ທີ່ຖືກຕ້ອງຕາມກົດໝາຍ ຂອງຂະບວນການສິ່ງອອກໄມ້

1. ບົດສະເໜີ ການສ້າງນິຍາມໄມ້ທີ່ຖືກຕ້ອງຕາມກົດໝາຍ
2. ການທົບທວນ ແລະ ປັບປຸງຂອບນິຕິກຳ
3. ວຽກງານໃນຕໍ່ໜ້າ

Technical Session 15.-17.12.2015

1

1. ບົດສະເໜີ ການສ້າງນິຍາມໄມ້ທີ່ຖືກຕ້ອງຕາມກົດໝາຍ

- ໄດ້ຮັບຮອງເບື້ອງຕົ້ນໂດຍ ກົມນໍາເຂົ້າ ແລະ ສິ່ງອອກ (DIMEX)
- ຕ້ອງການປຶກສາຫາລືເພີ່ມເຕີມ ກັບກົມອຸດສາຫະກຳ ແລະ ຫັດຖະກຳ ກ່ຽວກັບ ພາລະບົດບາດ ແລະ ຄວາມຮັບຜິດຊອບ
 - ໄມ້ສິ້ນເຂົ້າ ແລະ ສິ້ນອອກ ໃນໂຮງງານປຸງແຕ່ງໄມ້
 - ຂໍ້ຕົກລົງ ວ່າດ້ວຍ ຜະລິດຕະພັນໄມ້ (ເລກທີ 2005/MOIC.DIH.2016)
 - ບັນຊີຜະລິດຕະພັນໄມ້ ທີ່ຫວງຫ້າມ ແລະ ຜະລິດຕະພັນໄມ້ສໍາເລັດຮູບໃນການສິ່ງອອກ ຈາກ ກົມອຸດສາຫະກຳ ແລະ ຫັດຖະກຳ
 - ແລະ ອື່ນໆ
- ຂັ້ນຕອນໃນການຕິດຕາມກວດກາ ຂໍ້ມູນສິ່ງອອກຢູ່ດ່ານພາສີ – ລະບົບຖານຂໍ້ມູນແບບລວມສູນ

Technical Session 15.-17.12.2015

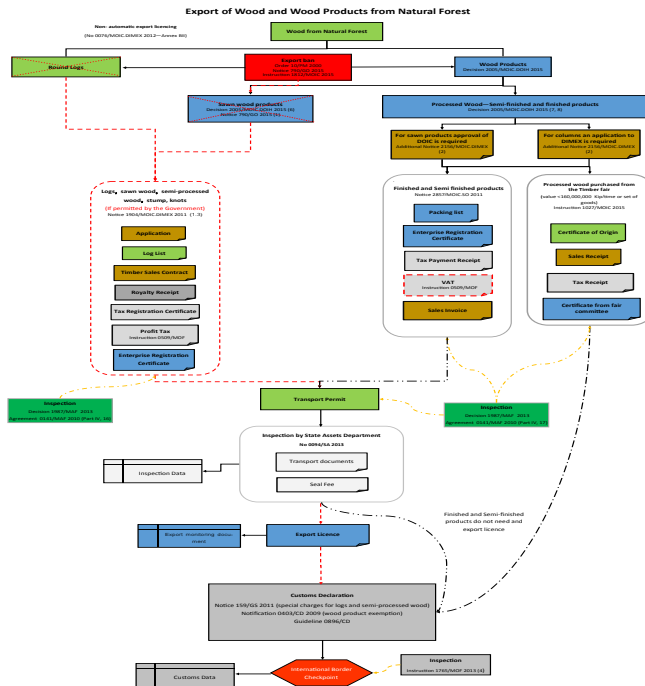
2

2. ການປັບປຸງ ກອບວຽກງານດ້ານນິຕິກຳ

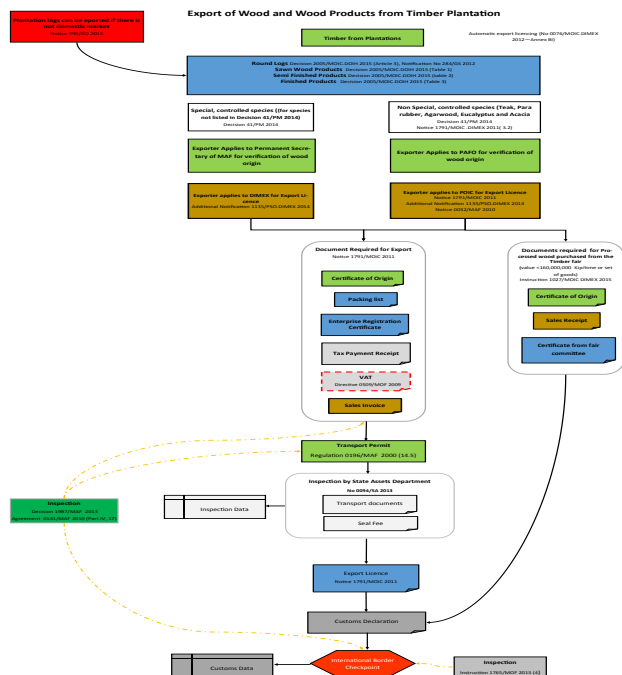
- ທົບທວນ ແລະ ປັບປຸງ ພາກທີ 1 “ການສົ່ງອອກໄມ້” ໃນບົດສັງລວມນິຕິກຳປ່າໄມ້
 - ການຢັ້ງຢືນແຫຼ່ງທີ່ມາຂອງໄມ້ ໂດຍ ກອດ ແລະ ກປປ
 - ການສົ່ງອອກໄມ້ປຸງແຕ່ງຈາກທຳມະຊາດ ທີ່ມາຈາກເຂດປ່າຜະລິດ ແລະ ເຂດພື້ນຖານໂຄງລ່າງ
 - ການສົ່ງອອກໄມ້ທີ່ຂຸດຄົ້ນຈາກການລົງທຶນປູກປ່າ ແລະ ປ່າປູກຂອງຄົວເຮືອນຂະໜາດນ້ອຍ
 - ແຈ້ງການເລກທີ 1812/ກອດ.2015 ໄມ້ຈາກສວນປູກສາມາດສົ່ງອອກໄດ້ ໃນຮູບແບບຂອງໄມ້ທ່ອນ ຫຼື ຕີຕັບ ຖ້າຫາກບໍ່ສາມາດປຸງແຕ່ງພາຍໃນໄດ້.
 - ຕາຕະລາງນິຕິກຳ ແລະ ເອກະສານກ່ຽວຂ້ອງກັບການສົ່ງອອກໄມ້
 - ການເຄື່ອນຍ້າຍໄມ້ຈາກໂຮງງານເຖິງຈຸດສົ່ງອອກ

Technical Session 15.-17.12.2015

3



4



Other Regulations	Ministry Responsible	Department Responsible
Law No. 46/NA on Enterprise 2013	MOIC	
Law No. 04/NA on Customs 2011	MOF	
Additional Order No. 10/PO on the prevention of harvesting and purchase-sale of prohibited timbers		
Edict No. 25/PM on Duty Rates 2012		
Order No. 10/PM On Log export Ban 2000		
Order No. 1765/MOF on Paying more attention on timber export to collect revenue to the government budget in an accurate and timely manner	MOF	
Order No. 17/PM on Strengthening the Forest Management, Protection and Coordination of Forest Management and Forestry Business, 2008		
Decree No. 114/GOL on Import and Export of Goods, 2011	MOF	
Decree No. 228/PM on the Origin of Import and Export Goods, 2010	MOF	
Decree No. 363/PM on the Notification and Enquiry of Trade Related Information 2010	MOF	Customs
Notification No. 0403/CD of Exemption of Determination of Customs value of exported wood products for basis of calculation of export royalties; 2009	MOF	Customs
Notification No. 1031/MOIC/DIMEX concerning the implementation of Decree regarding the origin of imported and exported commodity 2010	MOIC	DIMEX
Notification No. 1791/MOIC/DIMEX on Import and Export Licence for Plantation Timber, 2011	MOIC	DIMEX
Notification No. 1904/MOIC/DIMEX on Procedure to issue import and export license for Timber and timber products, 2011	MOIC	DIMEX
Notification No. 2273/CD Determination of Customs value of exported wood products as the basis of calculation of export royalties, 2009.	MOIC	Customs
Notification No. 0051/MOIC/DIMEX Notification to implement the decision 1415/MOIC/DIMEX on the form and size of wood products 2009	MOIC	DIMEX
Notice No. 159/GS on the Collection of extra charges on logs, processed timber products and construction timbers to be exported through the custom office	GS	
Notice No. 790/GD regarding timber port and royalties 2014-2015-2015	GO	
Notice No. 0032/MAF on the exportation of prohibited and special plantation timbers and non-prohibited plantation timbers	MAF	
Notification No. 1415/MOIC/DIMEX on the Form and Size of wood products 2009	MOIC	DIMEX
Notification No. 2228/MOIC/PO to continue combing and improving timber processing manufacturers 2011	MOIC	
Notification No. 0076/MOIC/DIMEX on goods subject to automatic and non-automatic import or export licensing).	MOIC	DIMEX
Notification No. 0094/SA Guidance on The Implementation of Ministerial Guidance on the Management of wood exportation for the purpose of revenue collection in timely manner; 2013	MOF	SA
Additional Notification No. 1135/MOIC/DIMEX Authorizing Provinces and Capital City to be in charge of studying and deciding on the approval for exporting of wood from plantations (Teak, Para Rubber, Eaglewood, Eucalyptus and Acacias) 2014	MOIC	DIMEX
Instruction No. 10503/CD for Detailed Customs Declaration by the ASYCUDA system 2012	MOF	Customs
Instruction No. 1696/CD on the Application of ASEAN Harmonized Customs Declaration Document (ACDD) 2010	MOF	Customs
Announcement No. 2857/on the Amendment of Notification No. 1904/MOIC/DIMEX, 2011	MOIC	DIMEX
Decision No. 2387/MOIC/DIMEX on Authorizing the Lao National Chamber of Commerce and Industry (LNCCI) to issue and administrate the certificate of origin (CO) for goods/products under the preferential tariffs rates	MOIC	DIMEX
Decision No. 41/PM on the authorization for Provinces, the Capital to consider and make decisions on exportation of planted timber in the form of logs and sawed timber from Teak, Rubber, Agar wood, Eucalyptus, Acacia auriculiformis and Acacia mangium 2014		Provinces
Guidance No. 0493/MOF of the Ministry of Finance on the implementation of the Customs Law No. 05/NA 2005	MOF	Customs
Guidance No. 04170/CD for the review of Customs Declaration with reference to 01470		Customs
Guideline No. 0105/MAF Concerning the Implementation of the Prime Minister's Order No. 17/PM 2008, 2008	MAF	DCI
Guideline No. 0896/CD Of the Director Customs Department On the special collection royalties for exporting logs, semi-finished wood and wooden furniture 2008		Customs

ການເຄື່ອນຍ້າຍໄມ້ຈາກໂຮງງານເຖິງຈຸດສົ່ງອອກ

- ອີງໃສ່ກົດໝາຍປ່າໄມ້
- ການຄຸ້ມຄອງສິ້ນເຂົ້າສິ້ນອອກໄມ້ພາຍໃນໂຮງງານປຸງແຕ່ງ
- ເອກະສານທີ່ຕ້ອງການສໍາລັບການສົ່ງອອກ
- ການຕິດຕາມການສົ່ງອອກ
- ການກວດກາຈາກສະໜາມ 3 ເຖິງຈຸດສົ່ງອອກ
- ຂໍ້ມູນສະຖິຕິການສົ່ງອອກຂອງພາສີ
- ການແຈ້ງພາສີສົ່ງອອກ
- ການຈັດເກັບພາສີອາກອນ

Technical Session 15.-17.12.2015

7

3. ວຽກງານໃນຕໍ່ໜ້າ

- ສ້າງຕັ້ງກຸ່ມຊ່ຽວຊານສະເພາະດ້ານ ກ່ຽວກັບ ຂັ້ນຕອນການສົ່ງອອກ
- ປະສານງານກັບ ກົມອຸດສາຫະກຳ ແລະ ຫັດຖະກຳ ເປັນຕົ້ນ ກ່ຽວກັບ ລະບົບການຄຸ້ມຄອງໄມ້ສິ້ນເຂົ້າ ແລະ ສິ້ນອອກໃໝ່ (CoC system)
- ສຶກສາ ແລະ ທົບທວນ ບັນດາກົດໝາຍ ແລະ ລະບຽບການ ທີ່ມີໃນປະຈຸບັນ (ເພີ່ມເຕີມໃສ່ຮ່າງ FLC)
- ປັບປຸງບົດສັງລວມນິຕິກຳປ່າໄມ້
- ສ້າງນິຍາມໄມ້ທີ່ຖືກຕ້ອງຕາມກົດໝາຍ ສະບັບທຳອິດ ກ່ຽວກັບ ຂັ້ນຕອນການສົ່ງອອກ
- ເຜີຍແຜ່ ແລະ ຈັດຕັ້ງປະຕິບັດ ສ້າງນິຍາມໄມ້ທີ່ຖືກຕ້ອງຕາມກົດໝາຍ ຂອງຂັ້ນຕອນການສົ່ງອອກ
- ເຊື່ອມໂຍງນິຍາມຂັ້ນຕອນການສົ່ງອອກໄມ້ເຂົ້າກັບນິຍາມອື່ນໆ.

Technical Session 15.-17.12.2015

8